



www.metra.eu

Architectural
visions for
contemporary
living







METRA
Italian Style Emotions



Made in Metra protects designers' dreams

Long live Metra window and door frames! From extrusion of aluminium to the design of shapes and components...

Metra controls and guarantees excellence in all phases of manufacturing and thereby frees the designers from all material and structural constraints.

Metra supports the creation of any architectural vision with its technical assistance service to design and specifications (MAP), which is provided free of charge to designers enabling them to transform concepts, style and creativity into "real sensations"... from technical assistance to final realization. The Metra product lines have been co-created with clients to become even more satisfying and advantageous to those who experience them and offer them... extraordinary solutions for contemporary living with low environmental impact, surfaces painted with zero solvent emission pigments, natural wood coverings, automation that can be used in domotic homes.

The production cycle is also eco-sustainable through the re-use of water and fumes, the productive recycling of aluminium and the energy-saving production process that uses natural fuels. This is what it means to be Made in Metra; high-quality and high-culture production where anything can be achieved.



Metra S.p.A
is member of GBC Italy



METRA
Italian Style Emotions

Curtain walls

Poliedra-Sky, your ideas take form



*Tamburini S.r.l., Brescia, Italy
Project Severini Associati & Partner*



Poliedra-Sky frees designers creativity stimulating the realization of innovative concepts of space and light. Poliedra-Sky is not only aesthetically pleasing but also a highly innovative technology for the creation of increasingly complex geometric shapes made from glass, stone, wood and composites. The wide range of extraordinarily exciting and different finishes include gloss, matt, extra-gloss, oxidized, scratch proof and self-cleaning. The thermal-break Metra profiles and the Poliedra-Sky photovoltaic system enable to save and produce energy. Moreover, Metra guarantees absolute air tightness against all atmospheric agents, unbelievable durability as well as acoustic and thermal insulation for every climate and latitude on the planet. Enjoy your vision... with Poliedra-Sky.





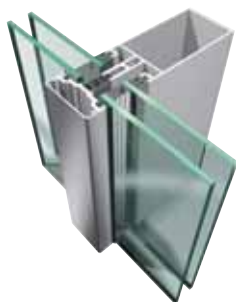
Curtain walls

*Dauphin Cosmetici, Boves (CN), Italy
Project M. Pellegrini & E. Rosso*

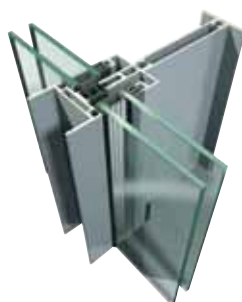


Interbrennero S.p.A. new Headquarters, Trento, Italy- Project M. Facchini

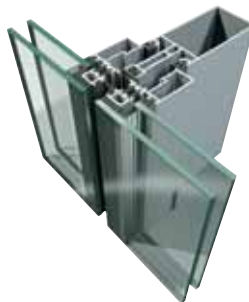
Poliedra-Sky 50



Poliedra-Sky 50 I



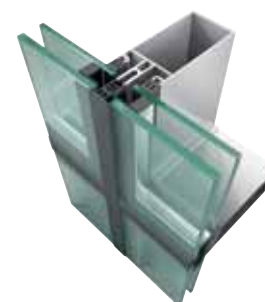
Poliedra-Sky 50 S



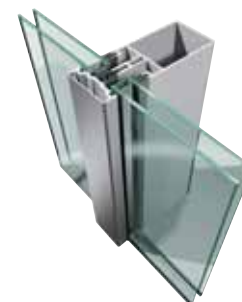
Poliedra-Sky 50 S
(continuous curtain walls)



Poliedra-Sky 50 CV



Poliedra-Sky 60



Snow Hill, Birmingham UK - Project Sidel Gibson Architects



Tower B, Area Garibaldi Milan, Italy - Project Massimo Roj /Progetto CMR



Poliedra-Sky Fast 80



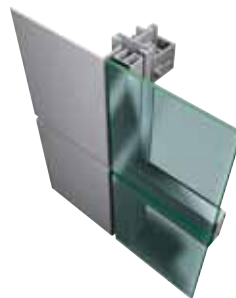
Poliedra-Sky Glass 130



Poliedra-Sky Glass 180

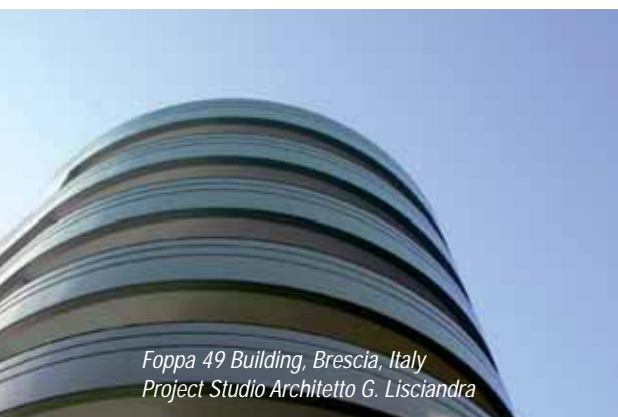


Urano Wall



Customized designs

Profiles as
special as
your ideas

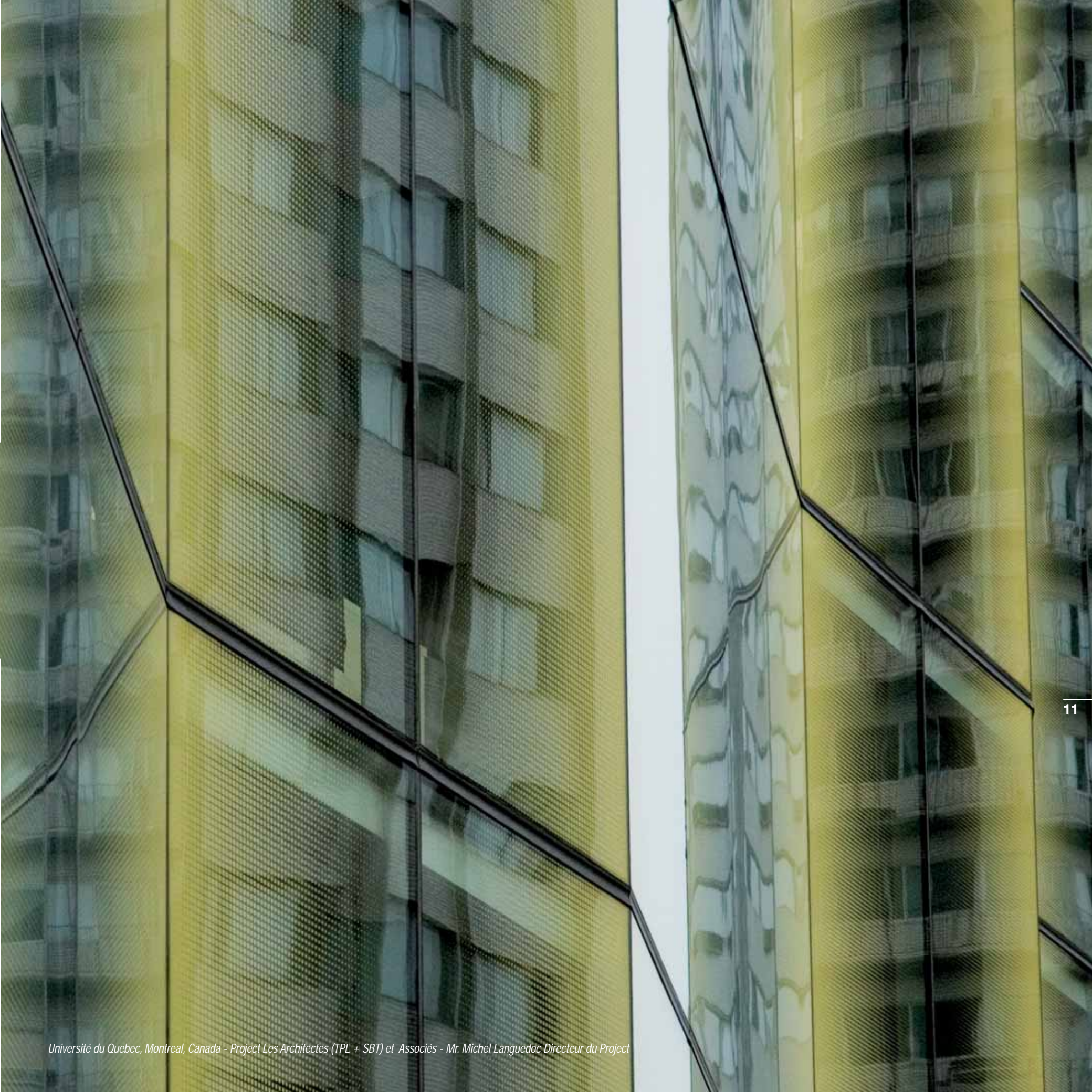


*Foppa 49 Building, Brescia, Italy
Project Studio Architetto G. Lisciandra*



Metra also represents special made-to-measure curtain walls according to your design... nothing is impossible if sustained by great ideas and Metra profiles.

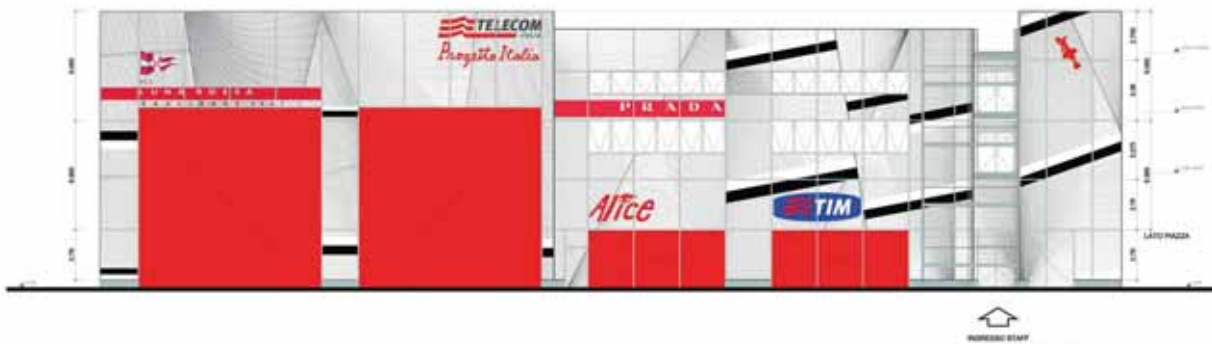
Metra's mission has always been to produce windows, doors and their finishes with complete respect for the environment, with high-durability and performance levels capable of satisfying your every wish. And when you need something truly unique, distinctive and complex, the highly-skilled MAP team (Metra service for Assistance to the Projects) are always available to support designers' wishes and visions ...anywhere in the world.





Customized designs

Base Team Luna Rossa, Valencia, Spain - Project Renzo Piano Building Workshop



Civil and criminal Court, Rimini, Italy
Project Studio Bevivino e Costa Architetti Associati



City Point, London, UK
Project Sheppard Robson



Docklands, Hamburg, Germany- Project BRT Bothe Richter Teherani



Sunblades systems

The design
that protects
and recharges
your ideas
with energy



The evolved and contemporary style offered by Metra sunblades systems is extraordinary. The new sunblades series is not simply a sun protection device - its use ranges from buildings to private homes and adds aesthetic value to any architectural design. Every home becomes more enjoyable and more liveable when you can choose between light, twilight or darkness... easily and at any time of the day. The simple insertion of photovoltaic panels in the blades produces clean energy with low environmental impact.

The sunblades can be supplied with all Metra systems surface finishes; automation can be managed by a home domotic system.





Private house, Cattolica (RN), Italy - Project Ing. Christian Profili

Sunblades systems



*Sede Social de la Empresa Municipal de la Vivienda Rivas Vaciamadrid Spain
Project Beirak y Ulanosky Arquitectos*



Regional TV Production Centre of Friuli Venezia Giulia, Italy

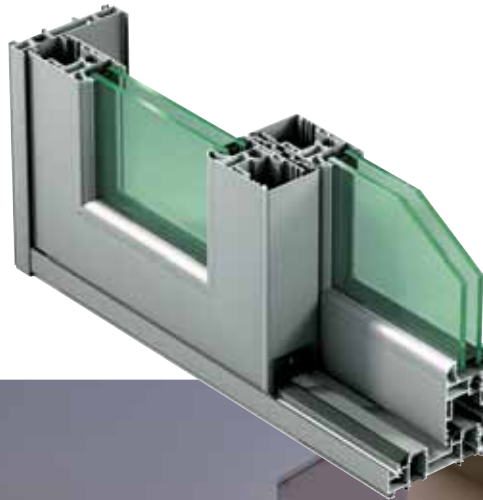


Juzgados de Mula, Murcia, Spain - Project Arch. Antonio Martín Bernaldo De Quiros



Sliding windows

The landscape becomes a benchmark for living



Choosing and offering a Metra sliding system means adopting a lifestyle that is increasingly contemporary and comfortable. Metra's sliding systems encompass all the technology and design a designer needs to enhance interior and exterior design solutions. Large windows, refined designs, even ultra-thin windows (ranges from 50 mm to 150 mm) with an aluminium core. Compared to solid wood or PVC, Metra sliding systems offer performance, aesthetics, safety, air-tightness, durability and comfort... to this we add a vast range of stunningly stylish surfaces, including natural wood.

Maximum air-permeability, water-tightness, wind resistance performances in all climates, but also salt resistance and exceptional thermal and acoustic insulation.

- Burglar-proof glass - Suitable for anti-theft system - Suitable for household automation and domotics - Suitable for combination with sunblade systems - Extremely smooth sliding action.





*Private house, Vallio Terme (BS), Italy
Project Arch. Paolo Livi*



*Private house, Lignano Sabbiadoro (UD), Italy
Project Arch. Marco Marchesi, Fedro Architeti Associati*

Sliding windows

NC-S 65 I



Roma line

Tahiti line

NC-S 65 STH



Roma line

Miami line

NC-S 120 STH



Montreal line

Europa line

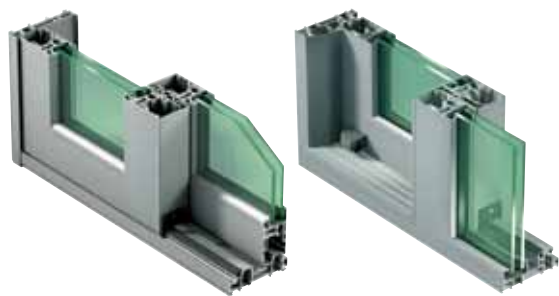


*Villa Fabro, Udine, Italy - Project Princic
& Partners Architects - Arch. Alessio Princic*



Giornale "Il Sole 24 ore"- Uff. Direzionali, Milan, Italy - Project Renzo Piano Building Workshop

NC-S 150 STH



Rodos line

Petra line

Casement windows

From
regulatory
compliance
to thrilling
designs



28 Duca D'Aosta Building, Brescia, Italy - Project M. Fuksas



Aesthetic and structural excellence, taste and technology combine to enhance and protect your living experience. Great versatility that never sacrifices the external appearance. Metra's casement windows and entrance doors are suitable for all your living needs: from town centre to contemporary architecture, from mountain refuge to seaside or countryside villa. Resistant to any type of atmospheric agent or climatic condition and with great long-term performance. Metra's casement systems, with an aluminium core, guarantee thermal and acoustic insulation to your home while saving a significant amount of energy. Design can be chosen from eight aesthetic lines available in a wide range of thicknesses (from 50 to 75 mm). There are many types of opening, accessories, coloured surfaces and coverings that can be applied in compliance with all municipal regulations, including heritage or protected sites.





*Palazzo "Mezzopreti" - Music Conservatory, Pescara, Italy
Project Laterza Arnaldo - Ufficio Tecnico della Provincia di Pescara*



Private house, Chicago, USA- Project Nicholas Clark Architects

Casement windows

NC 50 I



NC 50 STH



NC 65 STH



NC 65 STH-I



NC 75 STH



NC 75 STH-I



NH Hoteles, Milan, Italy- Project Dominique Perrault



Private house, Lignano Sabbiadoro (UD), Italy - Project Arch. Marco Marchesi, Fedro Architetti Associati



Doors and partition walls

Divide your spaces with style



Metra doors can be used in private living areas as well as in office spaces... in both cases, these solutions are perfect for many architectural settings. The **partition walls** are part of a complete system of profiles and accessories that optimize and demarcate spaces according to individual needs.

The common thread is without doubt style, structural synthesis and quality. Aluminium, natural wood, monolithic glass (8 mm)... the raw material is moulded according to the requirements and aesthetics of the project. Door and wall thicknesses can be ultra-thin and frames can have different shapes and aesthetic lines. There are many types of exciting finishes, from multilayered natural pigments to various effects such as metallic, oxidized or sandblasted. Metra doors and partition walls guarantee solidity, perfect air-tightness, durability and acoustic comfort. The numerous accessories ensure a wide range of choice and cater to all aesthetic tastes.



SIMES S.p.A Headquarter, Timoline di Cortefranca (BS), Italy - Project Studio Associato Falconi



INTER@CTIVE S.p.A., Treviglio Bergamo (BG), Italy - Project Studio Zero - Arch Rossini

Design complements

Aesthetic
choice down
to the last
detail



Handles and hinges... "Made in Metra" takes care of every detail.

The complements and accessories are suitable for all Metra systems.

Contemporary forms with unique and exclusive styles are designed to enhance every last detail in all types of living space, bringing together aesthetics and function.

The wide range of finishes ensures a vast assortment of aesthetic solutions and combinations in line with individual style.





Design complements

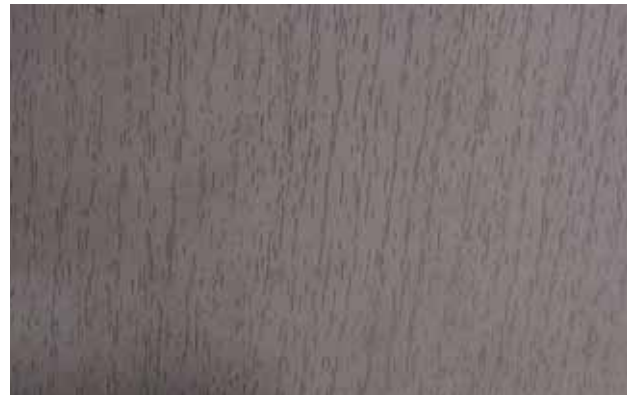
Mod. Roto



Mod. Atlanta



Mod. Toledo





MAP Assistance service

Metra: the partnership that supports your dreams



The Metra service enters into the mind of the designers and leaves only after dreams have been turned into reality. With MAP (Metra Assistance for Projects), Metra approaches designers and supports them by supplying everything technical they need to achieve their ideas. From design analysis to development, from defining specifications to creating the actual structure... all free of charge. MAP are the best partner an architect could ever wish for.



Finishes and coverings

An endless
choice of
contemporary
sensations



There's more to Metra than just top-quality components... there's also the surface.

Choosing a surface finish or covering is certainly the most enjoyable and creative part of choosing a Metra door or window system. Even "natural wood" enthusiasts can envision a natural wood door, but one with an aluminium core that never warps.

Surface finishes are made from natural pigments and have zero environmental impact, extraordinary beauty and durability, such as: oxidized paint that can be matt, gloss, and extra gloss, or paints with a sandblasted effect - wonderful to the eye and to the touch... then there are the bicoloured windows and doors which respond "outside" to architectural and regulatory requirements of the building and "inside" to the total personal freedom of choice and the desire for a particular interior.

Today, choosing a Metra window and door means choosing not only the best possible aluminium form and structure, but also its outer aesthetic... pure contemporary excitement.





Aluminium-Wood

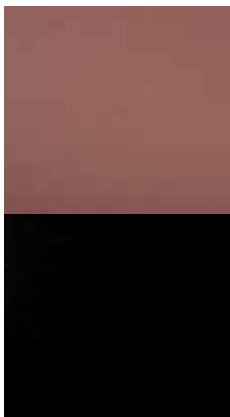


For those who love natural wood applied to contemporary forms, aluminium-wood is the perfect choice. Great resistance, security and airtightness with an aluminium core... as well as the stunningly stylish shades and look of various types of wood.

For graphic reasons, the colours shown in this page are only indicative. Ask your Metra dealer the sample of the colour chosen.



Evolution



Natural oxidized effects, matt, gloss, and even extra-gloss, produce a cool and trendy effect. The Evolution line was inspired by architects to enhance modern lifestyles. Evolution is highly sought after for all types of living spaces because of its strong aesthetic and durability in any type of climate.

For graphic reasons, the colours shown in this page are only indicative. Ask your Metra dealer the sample of the colour chosen.



Sablé



The Sablé finishes have a multi-sensorial effect. They are fantastic to look at and rough or satin to the touch. The sandblasted effect is quite versatile, trendy and easy to use in renovations and innovative living.

For graphic reasons, the colours shown in this page are only indicative. Ask your Metra dealer the sample of the colour chosen.





Natur-Plus



The Natur-Plus line combines the sturdiness and reliability of aluminium windows and doors with the colours of the wood. Two layers of powder reproduce the typical grain and hues of the various types of wood.

For graphic reasons, the colours shown in this page are only indicative. Ask your Metra dealer the sample of the colour chosen.



Raffaello



The Raffaello line was developed in collaboration with important design boards and offers two different finishes: smooth and hammered. Thanks to the specific use of the "pointillist" method - obtained by a controlled mix of several different shades of colour - both finishes have an original and exclusive feel and look.

For graphic reasons, the colours shown in this page are only indicative. Ask your Metra dealer the sample of the colour chosen.



Decor



Decor combines the strength of aluminium with the aesthetics of wood. This line faithfully reproduces the grain of traditional types of wood thanks to the sublimation process carried out on the painted layer.

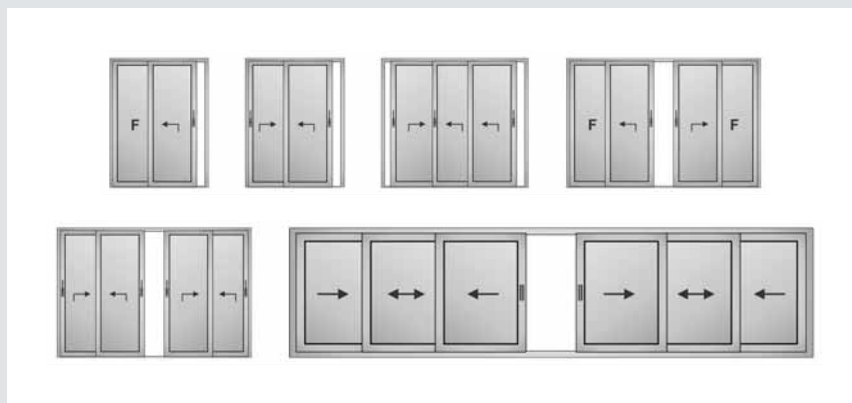
For graphic reasons, the colours shown in this page are only indicative. Ask your Metra dealer the sample of the colour chosen.





Sliding windows

Opening typologies



NC-S 65 I

Roma line

Base size: 50-90 mm

Type of air-water-wind seal: with brush gasket

Glass thickness: monolithic 6-8 mm, maximum 24 mm

Maximum load per sash: 150 kg

Thaiti line

Base size: 50-90 mm

Type of air-water-wind seal: with brush gasket

Glass thickness: monolithic 6-8 mm, maximum 24 mm

Maximum load per sash: 150 kg

NC-S 65 STH

Roma line

Base size: 50-68-98 mm

Type of air-water-wind seal: with brush gasket

Glass thickness: maximum 28 mm

Maximum load per sash: 150 kg

Miami line

Base size: 50-68-98 mm

Type of air-water-wind seal: with brush gasket

Glass thickness: maximum 28 mm

Maximum load per sash: 150 kg

NC-S 120 STH

Montreal line

Base size: 100-120 mm

Type of air-water-wind seal:

with Elaprene and brush gasket

Glass thickness: maximum 20-32 mm

Maximum load per sash: 200 kg

Europa line

Base size: 100-120 mm

Type of air-water-wind seal:

with Elaprene and brush gasket

Glass thickness: maximum 20-32 mm

Maximum load per sash: 200 kg

NC-S 150 STH

Rodos line

Base size: 140-150 mm

Type of air-water-wind seal:

with EPDM or brush gasket

Glass thickness: maximum 43 mm

Maximum load per sash: 300-400 kg (lift-and-slide solution)

Petra line

Base size: 140-150 mm

Type of air-water-wind seal:

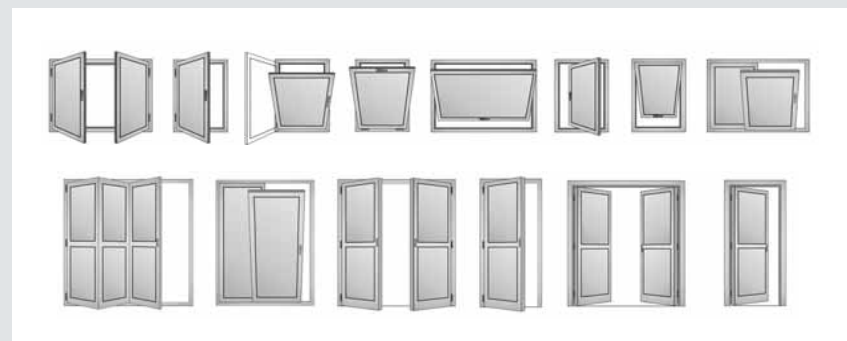
with EPDM or brush gasket

Glass thickness: maximum 43 mm

Maximum load per sash: 300-400 kg (lift-and-slide solution)

Casement windows

Opening typologies



NC 50 I

Base size: 50-60 mm

Type of air-water-wind seal: open joint (windows and French windows);

Double rabbet gasket (entrance doors)

Glass thickness: 4-42 mm

Aesthetic lines: Sagomata, Piana, Classica, Stondata

NC 50 STH

Base size: 50-60 mm

Type of air-water-wind seal: open joint (windows and French windows);

Double rabbet gasket (entrance doors)

Glass thickness: 4-42 mm

Aesthetic lines: Sagomata, Raggiata, Ferro, Tonda, Piana, Classica, Stondata

NC 65 STH

Base size: 65-85 mm

Type of air-water-wind seal: open joint (windows and French windows);

Double rabbet gasket (entrance doors)

Glass thickness: 14-58 mm

Aesthetic lines: Sagomata, Raggiata, Ferro, Scomparsa, Piana, Classica

NC 65 STH-i

Base size: 65-85 mm

Type of air-water-wind seal: open joint (windows and French windows);

Double rabbet gasket (entrance doors)

Glass thickness: 14-58 mm

Aesthetic lines: Sagomata, Raggiata, Ferro, Scomparsa, Piana, Classica

NC 75 STH

Base size: 75-95 mm

Type of air-water-wind seal: open joint (windows and French windows);

Glass thickness: 24-68 mm

Aesthetic lines: Sagomata, Raggiata, Scomparsa, Piana, Classica

NC 75 STH-i

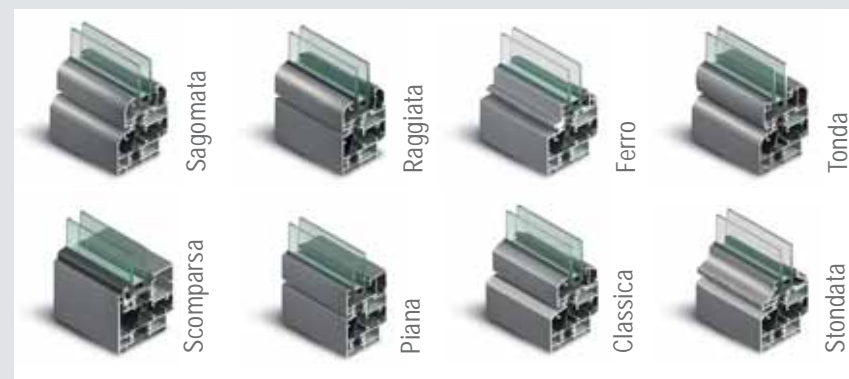
Base size: 75-95 mm

Type of air-water-wind seal: open joint (windows and French windows);

Glass thickness: 24-68 mm

Aesthetic lines: Sagomata, Raggiata, Scomparsa, Piana, Classica

AESTHETIC LINES



Doors

Opening typologies



NC 65 STH Doors



Base size:
65-75 mm
Type of air-water-wind seal:
Rabbit double gasket
Glass thickness:
4-48 mm
Aesthetic lines:
Sagomata, Piana

NC 75 STH Doors



Base size:
75-85 mm
Type of air-water-wind seal:
Rabbit double gasket
Glass thickness:
14-58 mm
Aesthetic lines:
Sagomata, Piana

METRA-Flex Internal doors



Overlapping solution

Doors can be made with panel and/or glass pane:
- Sash 53 mm with lock mounted on panel
- Sash 86 mm with lock mounted directly on jamb
- Door with overlapping sash having a double rabbit gasket



Coplanar solution

Doors can be made with panel and/or glass pane:
Construction variations:
- All panel
- Panel trimmed with aluminum frame
- Sash 36-68-92 mm
- Door with rounded sash, coplanar with frame



Embedded sliding solution

Doors can be made with panel and/or glass pane:
- Sash 36 mm with lock mounted on panel
- Sash 92 mm with lock mounted directly on jamb
- Elastic safety gaskets introduced in compensator sections
- Door with sliding sash embedded in the wall



Glazed solution with hinge

Doors can be made with glass:
- Sash 36 mm with glass to slip 8 mm shim
- Glass shimming wedges
- Opening by hinges
- Door with aesthetic elliptical shape sash

Assistance for designers

MAP assistance Every year Metra's Assistance service for Projects creates hundreds of new aluminum profiles for special solutions or specific projects: a vast wealth of experience archived and made available to designers to solve even the most unusual cases.

The MAP service is offered free of charge all over Italy through a network of qualified professionals.

Electronic Catalogue "Aluminum Systems for Architecture" contains:

-All the technical catalogues of our systems in PDF format, multimedia films of some phases of assembly;

-Animations to illustrate concepts such as acoustics, thermodynamics and the recognizability of the METRA product.

Metra LIB is an electronic library supporting design with Metra systems in AutoCAD environment. The software offers multiple searches and direct input into the CAD interface to any of the AutoCAD releases available on the market today. The library contains over 7400 drawings of: accessories, profiles, gaskets, catalogue pages, updates, wall mountings... in addition to particular technical solutions for any architectural setting.

Metra Uw Software for calculating thermal transmittance. Metra Uw is the new software for calculating the average thermal transmittance of Metra windows according to the standard EN-ISO 10077-1. The program allows to build countless types that can be realized with METRA series and, after having defined sizes and types of glass panes, to calculate the Uf value of each section of the structure and determine the Uw value of that typology.

www.metra.eu is the new institutional website, providing even more technical information and services for designers and doors/windows installers. Under the heading "services" you can request, by filling out the forms, the Metra software programs, updates, catalogues, assistance, newsletters and participation in training courses.

Metra Web Edilizia Metra enables Web access to a set of services with the data updated in real time:

- Entering and managing orders - Order status - Classes to which items belong - Video catalogue of profiles and accessories.

PressRoom service On the website Metra.it the PressRoom areas are accessible to all and are divided in: Press folder, Press releases, Press review, Adv, Calendar of trade fairs and conventions, Newsletter, Photo Gallery, Contacts.

New allMetraNews service If you want to be informed about the Metra world, register and you will receive our newsletter in your mailbox. Thanks to the RSS feed system you can be updated in real time on the latest news at the website allMetraNews.com. The service is free. For any information, visit: www.allmetranews.com

Metra Awards Every year with the International Competition "Sistema d'Autore", Metra awards the creativity of designers, builders and clients who are the creators of large and small projects using the Metra aluminum construction systems and special customized profiles that blaze new trails for architecture.

FP-PRO Wizard The rapid window estimation program enables:

- The graphic design of windows, French windows and shutters in different shapes and sizes, in the casement and sliding typologies.

- The use and visualization of any profile type,

- Application of accessories individually or in kits,

- Management of the costs of profiles, glass, panels, accessories and gaskets, differentiated by type of surface treatment,

- Generation of a cutting list for direct use by the cutting machine and list of machining operations for direct connection to work centres,

-Optimization of segments and sections.

Training courses: strong with the experience that for years has distinguished Metra in the technical training of its own engineers and sales force as well as those of its customers' companies, we are aware of the growing need for more competence to create a more aggressive and modern presence on the market. Therefore we propose a training program that differs according to be goals and the recipients. Subjects offered:

- Aluminum and environmental sustainability,

- Extrusion and surface protection: characteristics and certifications,

- Systems for doors and windows and curtain walls,

- Standards and tests on doors and windows and curtain walls,

- Brief outline on standards in force,

- Air/water/wind performance,

- Thermal and acoustic performance,

- CE marking of doors and windows and curtain walls,

- Technical-economic considerations on the use of thermal break,

- METRA Energy for energy-saving in construction,

- Design with the Sun,

- METRA software and services: including METRA-Web, METRAUw, METRA Lib.





METRA S.p.A.
Via Stacca,1
25050 Rodengo Saiano (BS) Italy
Tel: +39 030 6819.1
Fax: +39 030 6819 990
www.metra.eu

Product printed on certified FSC paper.
METRA uses ecological paper for its documentation and low environmental impact printing products.



Documentazione Metra
Brochure Visioni architettoniche - Inglese
Data di Edizione 02/2011 - Data di stampa 02/2011